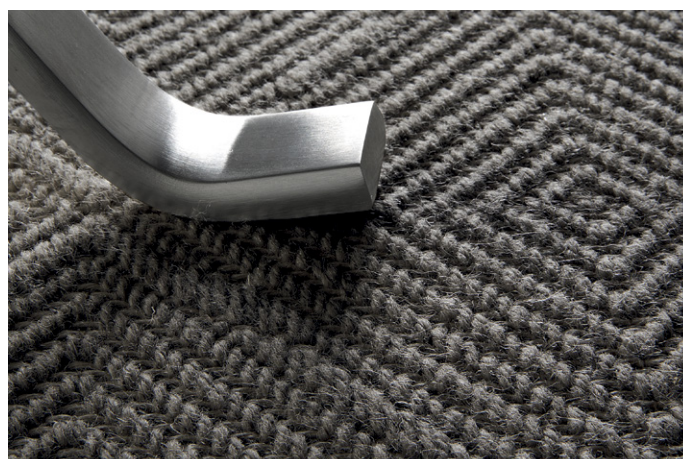
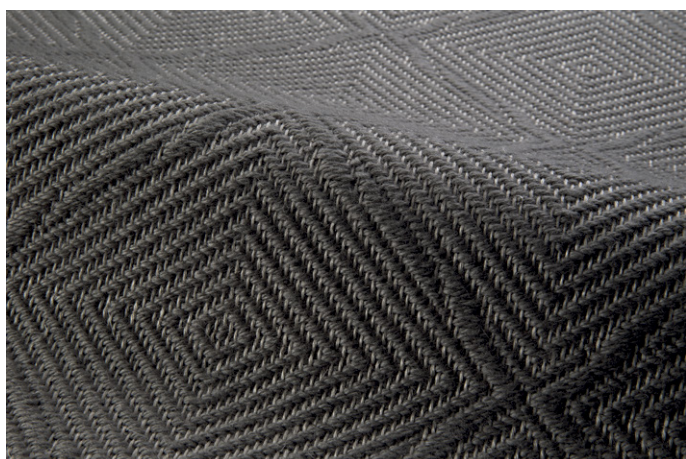


NEW FRANCO BELGE  
FLOOR COVERING LUXURY

# ST MORITZ



## Description

Monochrome, yet never dull or simple. Thanks to its pronounced Diamond pattern and a combination of soft wool and shining linen, St-Moritz stands for coziness and a soft comfort that makes it just right for every home.

## Technical Data

<b>Production method</b>	Flat weave	
<b>Composition</b>	60% wool / 40% linen	
<b>Composition back</b>	Action back	
<b>Roll width</b>	400 cm	13' 2"
<b>Pile height</b>	1 mm	0.039"
<b>Total height</b>	3 mm	0.118"
<b>Pile weight</b>	1035 g/m <sup>2</sup>	30.53 oz/yd <sup>2</sup>
<b>Total weight</b>	2060 g/m <sup>2</sup>	60.77 oz/yd <sup>2</sup>
<b>Pattern repeat</b>	W: 19 cm H: 22,6 cm	7.5" 8.9"

## Fitting & maintenance

We recommend stretched fitting on a quality underlay carpet by a professional installer.

Detailed fitting and maintenance information is available at [www.nfb.be](http://www.nfb.be).

## Special attention

Take special care if you make joints, the structure of the design can make them more visible.

## Available Colors

